

# Prince George's County Landfill Project Recognized as One of the WORLD'S BEST Power Plants

*This article is reprinted from the January-February  
2004 issue of Diesel & Gas Turbine Worldwide.*

*World's Best*  
**POWER PLANTS**

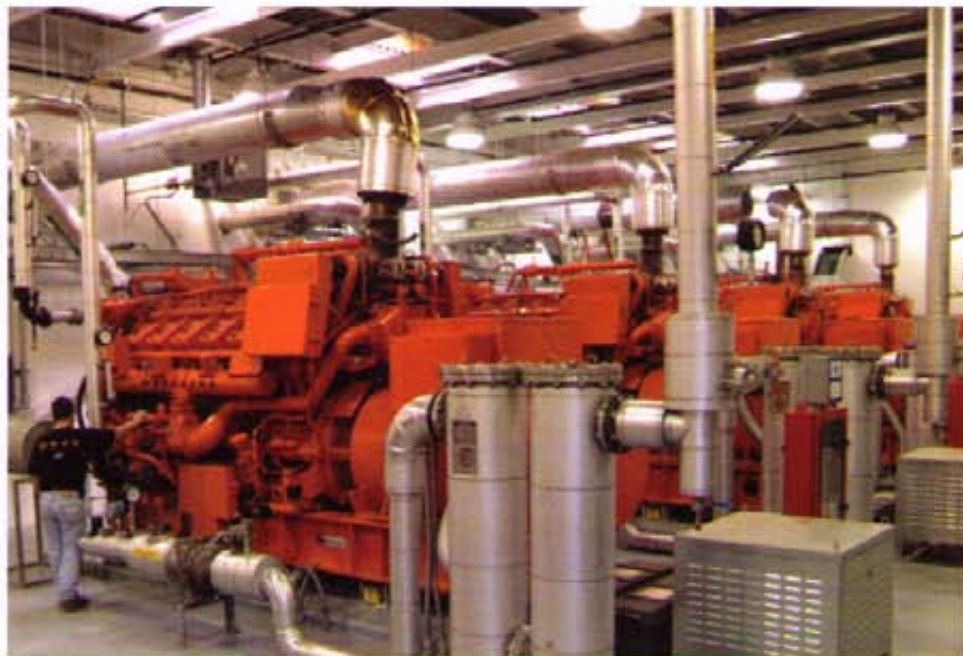
## Landfill Site is a Money Maker

*Waukesha Engine*

In 1968, Prince George's County, Maryland, U.S.A., established a landfill near the city of Upper Marlboro. The 810 hectare site receives residential and commercial waste from the several medium-sized communities, but very little industrial waste and no waste is brought in from outside the county. What is unique about this well-managed operation, however, is that its methane gas has been put to efficient use making electrical energy.

Since 1987, the biogas has been collected and used as fuel for Waukesha Engine Enginator engine/generator packages. Until recently the electricity produced provided power to a nearby county correctional facility, but now several more Enginator packages have been placed on-site in a new power generation facility. The plant came on-line in late summer 2003 and the power generated is exported at a profit to Potomac Electric Power Company (PEPCO), the local utility.

The new 4.2 MW engine/generator complex contains four new Waukesha Engine VHP7100GL Enginator units each producing 1050 kW at 1200 r/min for export to the local utility's grid. Curtis Engine, the authorized Waukesha Engine distributor



*A landfill site in Prince George's County, Maryland, U.S.A., is home to four new Waukesha Engine Enginator generator sets that run on the site's naturally produced methane gas. The new 4.2 MW complex complements an existing power generation operation.*

in the area, handles day-to-day operation of the engine/generator plants and was instrumental in the design and construction of both facilities.

Under the build, operate and maintain (BOM) scenario, Curtis is to be compensated for each hour that the engines are running and exporting electricity. By collecting and finding a use for the low-Btu content gas for the past 16 years, Prince George's County Landfill is ahead of the trend toward methane utilization now under way across the U.S.

## Curtis Engine & Equipment, Inc.

3918 Vero Road • Suites K & L • Baltimore, Maryland 21227-1516  
(410) 536-1203 • (800) 573-9200 • Fax (410) 536-2098  
www.curtisengine.com • E-Mail: sales@curtisengine.com